

20
PAGES
OF SPEL
NEWS

JULY
2020

the flow

ISSUE #2 JULY 2020

Insights
Projects from VIC & SA

Open Mike
On Point

Finding joy
Perspective

In-depth
Dan Thorp

Community
Building

our
RIVERINE
DARLING.





CONTENTS

THE FLOW BY SPEL MARKETING

02

**FINDING JOY:
A POSITIVE VISION.**

General Manager Andy Hornbuckle welcomes all to the second issue of The Flow.

04

**MONASH LESSONS:
WATER RE-USE.**

See how we worked with Monash University to deliver a SPEL Stormchamber

06

**OPEN MIKE:
ON POINT**

Mike Maguire takes us through the July maintenance work at Banora Point

08

**DRIVEN:
DAN THORP.**

Meet one of Victoria's finest as he provides an exposition on the SPEL experience.

10

**PROJECT INSIGHT:
TGA SOMERVILLE.**

A snapshot of how the SPEL Baffle Box was installed to manage captured pollutants.

11

**PROJECT INSIGHT
DOCK ONE, SA.**

Glen Stone walks us through meeting council guidelines and contributing to cleaner rivers.

12

**AN INDUSTRIOUS
INDUSTRY.**

The latest stormwater news from around the world, featuring an update on SQIDEP.

14

**BUILDING
COMMUNITY.**

You are our family. We take a look at one of our SPEL employee initiatives

16

**UPCOMING WEBINAR:
MARINE PLASTICS.**

On June 29 it is our privilege to welcome Dr. Denise Hardesty of CSIRO in a special web event.

17

**STORMWATER
SHEPHERDS.**

Introducing our not-for-profit initiative, Stormwater Shepherds.

18

**JUST ANOTHER
CONTACT PAGE.**

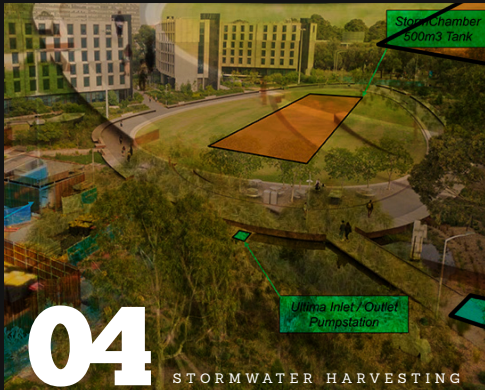
We send you into the sunset with the best of wishes. Stay healthy, Stormies.



the
LATEST IN
PROJECTS

In this issue we've got snapshots galore of SPEL projects from around Australia. Should you want to know more about the specification, or application, of a particular project please don't hesitate to reach out.

featured projects



Andy Hornbuckle
General Manager



Finding joy

Welcome to the second edition of **The Flow**. We're pleased to share additional project insights, stormwater industry news and everything in between. It's been a busy month at SPEL HQ - we've welcomed Michelle Peebles into our Marketing team and we're absolutely rapt to have her onboard.

I spoke in the last issue about my team's wonderful community work and you can read more about that in later pages. To our Victorian stakeholders, our thoughts and prayers are with you - we know you'll bounce back stronger. That said, feel free to reach out to me personally if there's anything SPEL can do for you and your family.

Andy Hornbuckle
General Manager



WWW.SPEL.COM.AU

Case Study

SPEL Stormwater worked collaboratively with Monash University to achieve their sustainability goals, to create water self-sufficiency over the coming decade. The project facilitates a series of 500,000 litre tanks linked within an irrigation ring main, therefore, instead of pumping to sprinklers, it feeds a pipe around the whole project enabling Monash University to tap off for reuse.

Stormwater harvested provides non-potable water to student accommodation and irrigation. SPEL engaged sister-company AKS to provide a turnkey package for all pumps and tanks. The initial specification of concrete tanks was switched out for the latest in blue-green infrastructure presenting cost-savings and a reduced environmental footprint.

SPEL STORMCHAMBER

Monash University Stormwater Harvesting



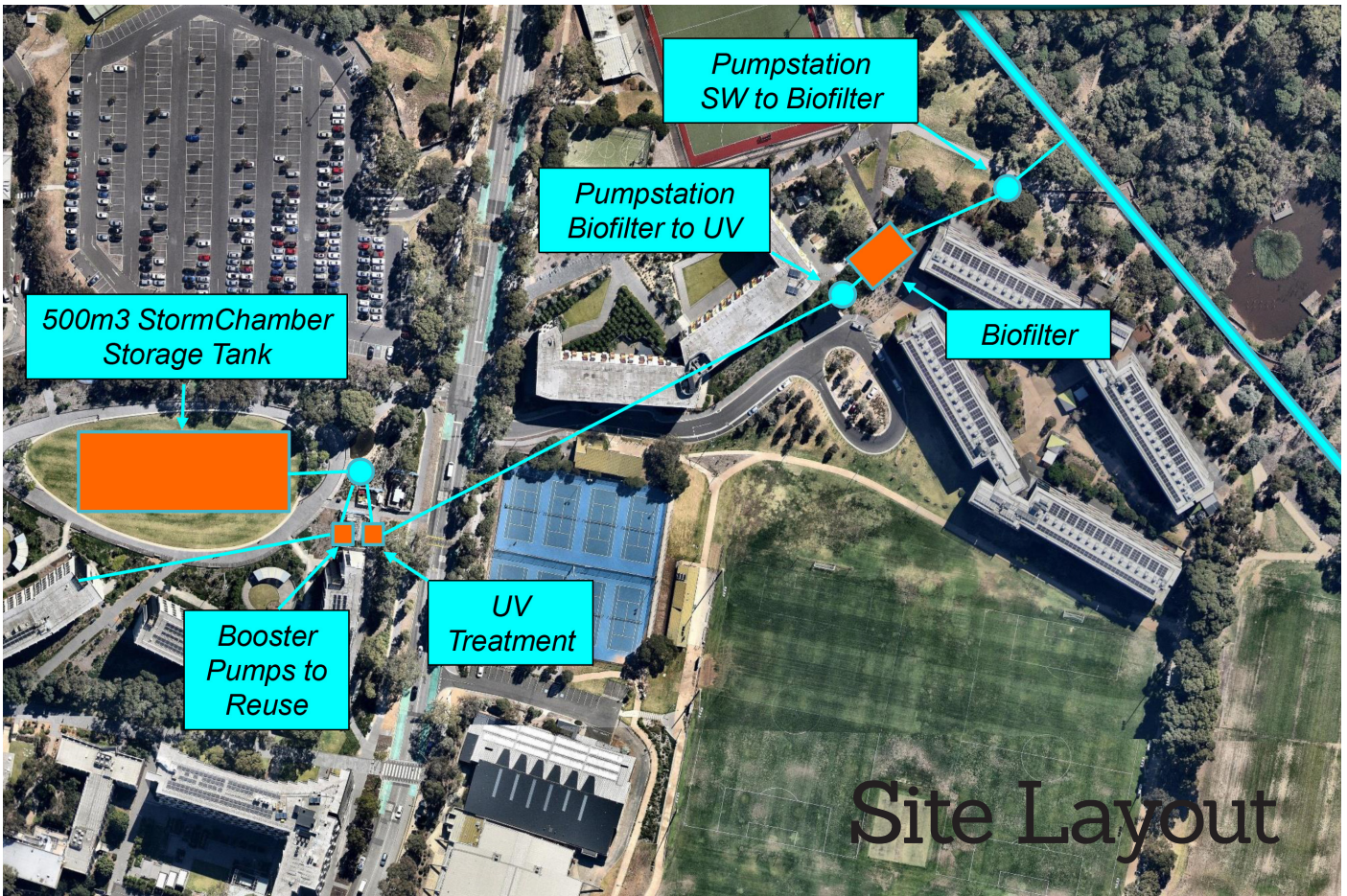
Benefits over other storage methods

- Helps counter drought conditions by maintaining groundwater base flow to streams.
- Superior load ratings for trafficable areas. Complies with AS5100, W80 wheel loads.
- Maximised volume for efficient storage void ratio.
- The least cost underground alternative.
- The lowest installed cost of any modular storage technology.
- Burial depths up to over 9m.
- Multi-layered installations possible for restricted surface area sites.
- Superior design eliminates costly and complicated header manifold systems.
- Can be utilised for conveyance in remote locations.



The Monash University Water Harvest & Feature Repair Works involved the rectification of existing water harvest system and bioretention retaining wall, alongside associated steel support.

Turn over to view the final site layout and completed installation imagery to see how we engineered clean water.



about Monash

Named after engineer, military leader and public administrator Sir John Monash, Monash University was established by an Act of Parliament in 1958. When our first students began their studies at our foundation campus in Clayton in 1961, we became the first university established in the state of Victoria in over 100 years.

From a single campus at Clayton with fewer than 400 students, Monash has grown into a network of campuses, education centres and partnerships spanning the globe. With approximately 60,000 students (and 350,000 alumni) from over 170 countries, we are today Australia's largest university. - <https://www.monash.edu/>

Open Mike



Mike Maguire provides a snapshot of his teams latest work at the SPEL Floating Wetlands installation in Banora Point.



Michael Maguire - National Maintenance BDM

On Point

If it's a SPEL product, we'll service it. If it's a competitor product, we'll service it. Our priority is a safe worksite and clean water outcomes. If you're in any doubt reach out to Michael Maguire and his team today through michaelmaguire@spel.com.au

SEVEN ISLANDS OF FLOURISHING BIOTA



Banora Point Maintenance

SPEL.COM.AU

Following up on our initial project report, the second stage consists of maintenance for the Floating Wetlands which is included in the Project Tender and covers twelve months from practical completion of the installation. The required inspection intervals are to be done at four-month periods and will consist of three maintenance inspections over twelve months. First maintenance was actioned on July 9th, 2020, to address the following strategic priorities.

1. Check for plant growth on each island for health and growth
2. Remove any noxious weeds and collect any pollutants
3. Inspect the integrity of the island structure
4. Check connection points and cabling securing the islands in place
5. Three specific locations are then recorded to report plant status and growth height to council



covid safe



Our maintenance teams are operating throughout the COVID-19 crisis using best practice and following the guidance of the World Health Organisation and Australian Government. Should you have any questions about our on-site practices please don't hesitate to reach out.

THE LATEST FROM BANORA POINT



The island plants appear to be performing quite well measured by plant conditions and growth height, although there is organic growth slowdown due to the cooler weather. Some species have grown faster which speaks to the diversity of plant species that flourish on SPEL's Floating Wetlands. The island plants appear to be performing quite well measured by plant conditions and growth height, although there is organic growth slowdown due to the cooler

weather. Some species have grown faster which speaks to the diversity of plant species that flourish. The Floating Wetland islands themselves are in superb condition with only minor plant loss on each island, which is expected to happen during the formative lifecycle of the structure.

The next scheduled maintenance inspection will be in November 2020 and we look forward to sharing progress.

- Written by Troy Mansinger

ABOUT ME



I have worked in maintenance teams for the past 12 years. I worked with Key account managers performing audits and inspections for Coles, & Kmart Tyre Auto & Woolworths.

RECENT CLIENTS



SPEL have recently secured ongoing work with industry leaders Liberty & 7 Eleven on a National maintenance schedule.

Dan Thorp Driven

D

How long have you worked at SPEL?

2 Years with the SPEL Qld team, 1 year and counting with SPEL Vic/Tas

What is your position at SPEL?

Business Development Manager – Vic/Tas

What are you responsible for?

Sales Coordination, getting the most from my team mates and making sure we're across as many projects as we can. I love it.

What do you like about the SPEL team?

Their Passion & Drive

What do you like about working with SPEL clients?

Every project is different, I enjoy communicating with our clients, working hard to provide them with right solution.

Most challenging part of the industry/role/team?

Working remotely from the team. I am fascinated by the complex engineering aspects of our projects and the challenge is there to keep learning with the team.

dream origin team (afl)

Lee Parker - FB

Jacob Pettman - CHB

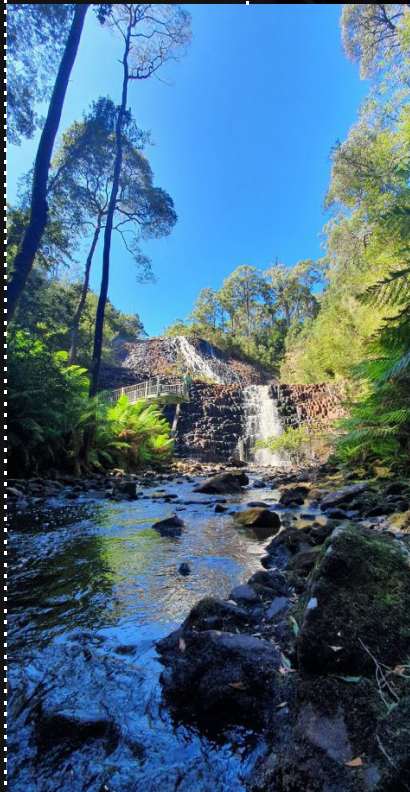
Sid McAlpin - Centre

Mircea Stancu - Ruck Rover, Pier Salandanan - Rover

Oscar Salisbury - CHF

Kurt Jensen - FF (Tony Lockett style... & look)

BY LAI ADOLFO



Joy in water

Is there a water experience that brings you joy?

I LOVE fishing and diving and exploring local creeks & rivers.

Best SPEL experience?

Everything about this company is awesome! The vision, eagerness to find a solution and everyone's drive is a pleasure to be a part of everyday.

Electing a team mate to local council, who would it be and why?

Jacob Pettman - He'd make sure everything was 100% correct, 100% of the time.

“
I grew up about thirty minutes out of the town centre on a 350-acre beef and crop farm, in Mawbanna. Fifteen minutes drive down the road from this farm is a unique place called Dip Falls which we like to spend the day at.”

IMAGERY : NORTH WEST TAS

beautiful **Tasmania**

My family likes to explore the rugged North West Coast, which is often referred to as the roaring '40s due to forty-knot winds! Given these conditions, we currently have two wind farms in Bluff Point and Studland Bay, with two more proposed. Off the cliffs from Bluff Point wind farm are some of the most unpredictable rough seas you'll ever see. When the wind turns easterly, the sea completely flattens. It's the perfect opportunity to get out in the boat for recreational crayfish and abalone diving, set the shark line for some Gummy or trawl for some Yellowtail Kingfish.

Circular Head is renowned for an abundance of seafood, with many commercial fishing and crayfish boats in our waters and docked between Smithton and Stanley. We also have an Abalone factory which ship to Asia, where it is highly sought after.

I grew up about thirty minutes out of the town centre on a 350-acre beef and crop farm, in Mawbanna. Fifteen minutes drive down the road from this farm is a unique place called Dip Falls which we like to spend the day at. There is a spectacular waterfall that we call 'The Big tree', which is a very old eucalyptus tree seventeen metres around the base! If you venture off the beaten track and along the beautiful Dip River deep into the forest you may be lucky enough to see a freshwater Tasmanian Lobster! While you could catch these incredible creatures fifteen years ago, they're now on the endangered species list. Times change, but it's still one of the most beautiful places in the world.

- Dan Thorp



insight

THE LATEST FROM VICTORIA



A collaboration by Melbourne Water, Mornington Peninsula Shire, Max Bright & Sons Pty Ltd & Engeny Water Management and SPEL Stormwater.

ONLINE VISIT
SPEL.COM.AU



TGA Somerville

The TGA Somerville industrial estate has a historical flooding problem that has long impacted nursery operations. SPEL's Baffle Box is taking the low flows and treating them before going into a meltwater wetland.

The nursery has not only had the problem resolved but can now draw the water from the wetland, enabling stormwater harvesting.

SPEL's Baffle Box is able to treat the full pipe flow in all conditions, and its unique design ensures that the captured pollutants are kept dry and won't decompose or further pollute.

Features of the Baffle Box include:

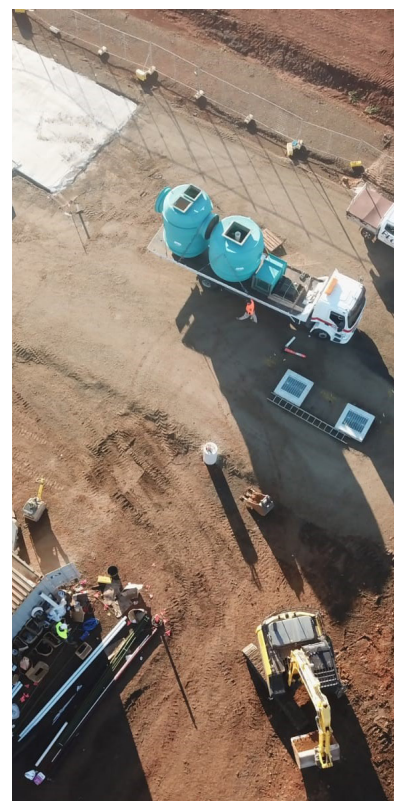
- Pollutant separating baffle box
- Treats the entire flow
- Minimal head loss with floating weir
- Separates foliage - maintaining a dry storage
- Ideal retrofit capability
- Quick & easy to install
- Fits within existing easements
- Multiple inflows
- Daylighted for pollution education

If you have any questions about how a Baffle Box can improve your project please reach out to your State contact.

insight

THE LATEST FROM SOUTH AUSTRALIA

around the states



Dock One, Port Adelaide

Our client needing to better stormwater pollution reductions, in line with council requirements of 80 TSS, 60 TP and 45 TN.

With minimal available space for traditional a bioretention swale we worked collaboratively to install an offline Stormceptor to remove hydrocarbons, plastic pollution and heavy sediment; and a Hydrosystem to remove fine silt and nutrients.

This new development is discharging directly into the Port River, a sanctuary for river dolphins and other marine life, so a focus on clean water is a high priority for the client.

Click here: <https://au.whales.org/whales-dolphins/how-we-help/protecting-the-port-river-dolphins/> - "We don't know why so many of Billie's calves have died but suspect the polluted waters which she called played their part."

SPEL and the community is very thankful that Port Adelaide Enfield Council has insisted on these pollution targets so that future marine life in the Port River is protected.

We're committed to working with our clients to tell their project story. You can reach out to Glen to discuss South Australian opportunities on 0448 309 637.



Latest from r&d

Important news for Developers on the Gold Coast.

As a result of providing extensive testing data, the City of Gold Coast has recently approved higher efficiency ratings for SPEL filters, potentially reducing the number of filters now required to achieve water quality. This exciting development could result in savings on both the procurement and maintenance costs of your next project. We encourage all those involved in current or future City of Gold Coast developments to contact us regarding these increased efficiency ratings.



Spel Basin

The SPEL Basin is an advanced stormwater treatment system that works with natural forces to provide superior pollutant removal. Delivered as a prefabricated, compact and self-contained treatment system, utilises HORIZONTAL FLOW bioretention technology and multistage pre-treatment.

Easy to size, install and maintain, the SPEL Basin is ideally suited for the urban environment – treating runoff from parking lots, roadways, residential and commercial developments and/or retrofit applications.

Available in numerous sizes and various inlet configurations, including internal high flow bypass, the SPEL Basin is clearly the most versatile and innovative stormwater treatment system.



Brisbane City Council approval

We are pleased to advised the SPEL Basin has been assessed as compliant with the Council Proprietary STAs determination process. This device will be added to the Asset Register and can now be included in Development Applications for assessment against the CityPlan 2014 performance objectives.





WORLD

DOMESTIC

REGULATORY

EVENTS

PEOPLE



Stormwater News

Each edition we'll select several stories from around the globe that are leading the stormwater discussion. As our understanding grows around the need for stormwater infrastructure maintenance, we're buoyed by the approaches by Councils and Municipalities to prevent further degradation and pollution into our riparian zones.

Gold Coast adopts SQIDEP in accepting Stormwater Proprietary Devices

In 2019, Stormwater Australia published the Stormwater Quality Improvement Device Evaluation Process (SQIDEP). This national protocol is an industry-formulated, independent evaluation process for verifying performance of stormwater proprietary devices.

"With the national protocol in place, and an overarching need to ensure consistency, the City of Gold Coast's guideline on the performance evaluation of SPDs has been retired.

Any new device to be accepted by the City will now require Stormwater Australia's endorsement based on the SQIDEP. With regards to the SPD's that have previously been evaluated based on the City's protocol, it is proposed to uphold this accreditation for two years from 1 July 2020, thereby giving enough time to obtain the required certification from Stormwater Australia."

- Reposted from gchaveyoursay.com.au

SPEL Stormwater and Stormwater Shepherds wholeheartedly endorse SQIDEP. Beyond its technical proficiency in evaluating devices, it offers a consistent framework understood by all stakeholders from developers, council, manufacturers, and the general public.

A HELPING HAND



B.

Building Community

W W . S P E L . C O M . A U

B. I wanted to take a moment to highlight a few positive wins here at SPEL Stormwater.

I have been working with SPEL Stormwater now, for around 1 year, and have learned plenty about how it operates and its fabric. Besides being civil industry leaders and a major supplier of stormwater treatment and oily water separator products, the company has a strong culture displaying a genuine commitment to their people and their clients.

Most people are aware of donations made by everyday people and businesses during the recent fires and floods. What has blown me away as an employee is that SPEL has donated \$250,000 to the RRT (Rapid Relief Team) - <https://www.linkedin.com/company/rapid-relief-team-ltd-rrt/> who have been assisting farmers with drought relief, feeding frontline firefighters during the bushfires and now supplying food boxes to families in isolation or in need, due to COVID-19.

Reflections by Troy Mansinger

I was fortunate enough to deliver two of these boxes to valued clients that have been affected by the COVID19 issues and have subsequently lost their positions of employment. These are times that we have not experienced in our lifetimes, and, hopefully, won't again once it has passed. We must remember that all are impacted. This virus does not choose race, religion, or gender, but affects us all in some way.

For me to deliver the food boxes and see real smiles on real people's faces - well, that's a SPEL story worth telling. Kudos to SPEL Stormwater and how they work with their employees and client base. Business is about making money yes, but to give back is something I am proud to be part of.

IF YOU KNOW SOMEONE.

Please reach out to any one of our team if you know someone in need.





Stormwater Shepherds

POWERED BY **SPEL** STORMWATER

WEBINAR

July 29th
4PM AEST

Marine plastics: a deep dive.



Guest Speaker

Dr. Denise Hardesty
CSIRO

EARN A
CPD

REGISTER



join
US
JUNE
29



Dr. Hardesty is a principal research scientist and team leader with CSIRO's Oceans and Atmosphere. Her current research projects focus on plastic pollution and illegal fishing.

For the past several years she has been leading a portfolio of marine debris projects which has resulted in global recognition of Australia's role in cutting-edge plastics pollution work of high value and impact. She provides expert opinion on marine debris related matters to the federal government, to non-government organizations, to industry stakeholders and NGOs within Australia and internationally, and to other audiences focused on marine debris impacts at a multitude of spatiotemporal scales.

She has also been a key player engaging in national and international workshops with government, industry, fisheries and other stakeholders aiming to reduce the trans-boundary ghostnet issue.

We're creating more webinar content, more internal and external communications, more video, than ever before to remind each other how much we are valued.



SPEL Marketing
JULY 2020

Meet DR. DENISE HARDESTY



About us

OUR MISSION

Stormwater Shepherds are a not-for-profit initiative targeting plastic pollution in riparian environments. Urban generated pollution accounts for a staggering 80% of ocean plastic, and we have made it our mission to stop it at the source. Our 2020 strategic goals in stormwater management and pollution prevention directly address the issue through education, riparian cleanups, and advocating, to improve the quality of our urban waterways.

SPEL Stormwater is proudly powering Stormwater Shepherds by contributing 5% of its revenue to ensure a cleaner water experience for all.

stormwater SHEPHERDS

On guard: protecting Australia's darling

Home to more than 2.6 million people and providing safe drinking water to over 3 million Australians, the Murray-Darling Basin is our largest and most complex river system. Spanning 77,000 kilometres over 4 states, it supports a staggering 40% of Australia's agricultural production and tips in a notable \$8 billion to our tourism industry. Ecologically, 30,000 independent wetlands are home to 120 species of waterbird and 46 of fish. <https://www.mdba.gov.au/discover-basin>

Yet its future is in crisis. In August 2013, the Murray Darling Basin was listed as a 'critically endangered' ecological community, plagued with salinity, erosion, blue-green algae and water quality problems. <https://www.legislation.gov.au/Details/F2013L01562> The result of ten years' worth of drought and significant increases in the impact of tourism, agriculture and manufacturing.

In 2010 the Basin Plan was established to manage the waterways as a collective system – restoring them to a healthier and sustainable level, while continuing to support farming and other industries benefiting the Australian community. Yet the debate continues a decade on – are these key objectives are being met and how will an additional 450 gigalitres of water be recovered? With allegations of 'water theft and grossly deficient compliance along the Darling River' combined with basin's overall 'poor health', reports highlight a stark contrast to the official 'all is well' view. <https://theconversation.com/the-murray-darling-basin-plan-is-not-delivering-theres-no-more-time-to-waste-91076>

The future for this Australian icon and its supposed recovery plan is now perhaps as murky as its water. Local communities are reporting a growing sense of helplessness and frustration (reference 1) with the recent Royal Commission delivering accusations of negligence, unlawful action and poor management. (reference 2). It is with great personal interest that Stormwater Shepherds will continue to monitor this situation and the outcome for our environment.

Reference 1 - <https://www.abc.net.au/news/rural/2020-03-16/murray-darling-basin-report-reveals-yawning-gap-winners-losers/12058948>

Reference 2 - <https://www.abc.net.au/news/2019-02-01/what-next-for-the-murray-darling-basin-plan/10768684>



until next time

GO WITH THE FLOW

WRITTEN AND EDITED BY SPEL MARKETING.

WWW.SPEL.COM.AU