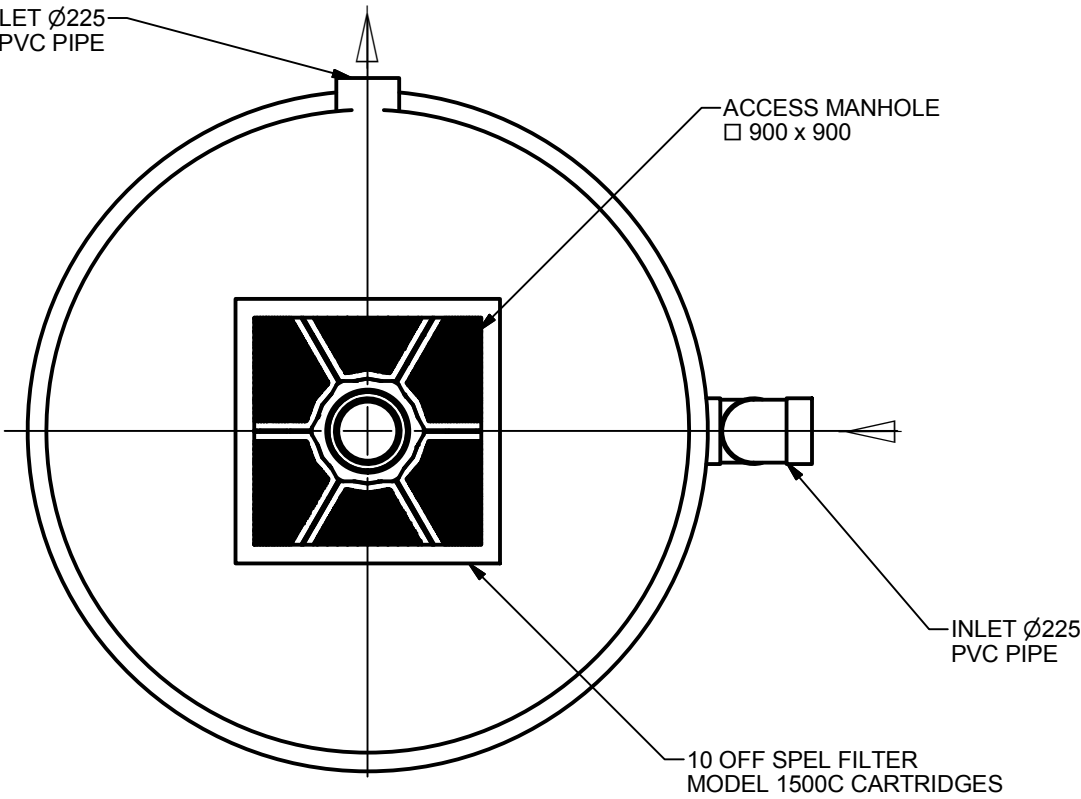
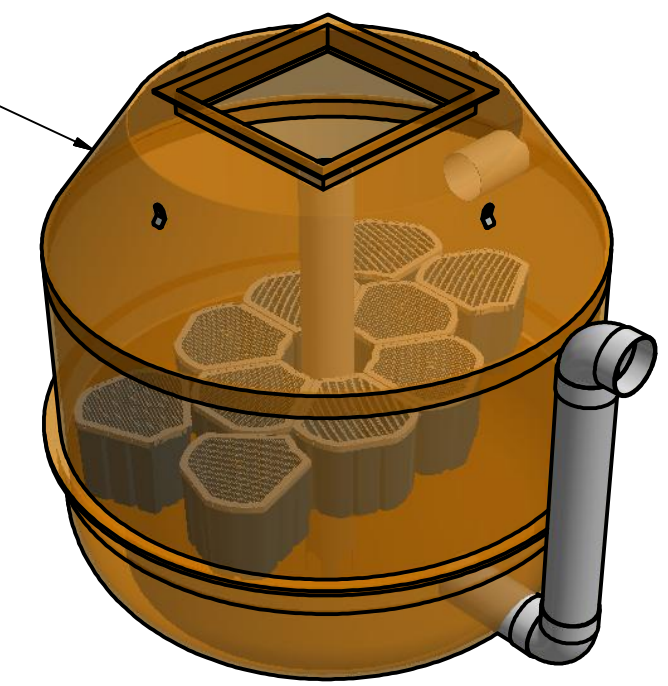


| REVISION HISTORY | | | | |
|------------------|-----------------|----------|---------------|------------|
| REV | DESCRIPTION | DESIGNER | CREATION DATE | CHECKED BY |
| 1 | INITIAL RELEASE | M.MAKIN | 20/10/2016 | |



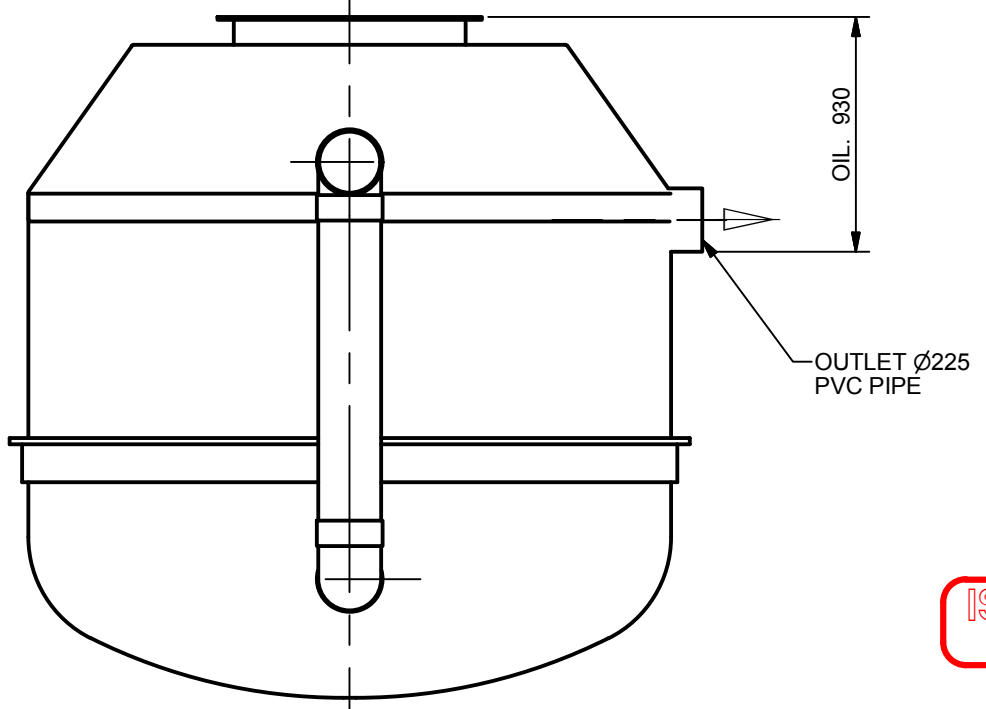
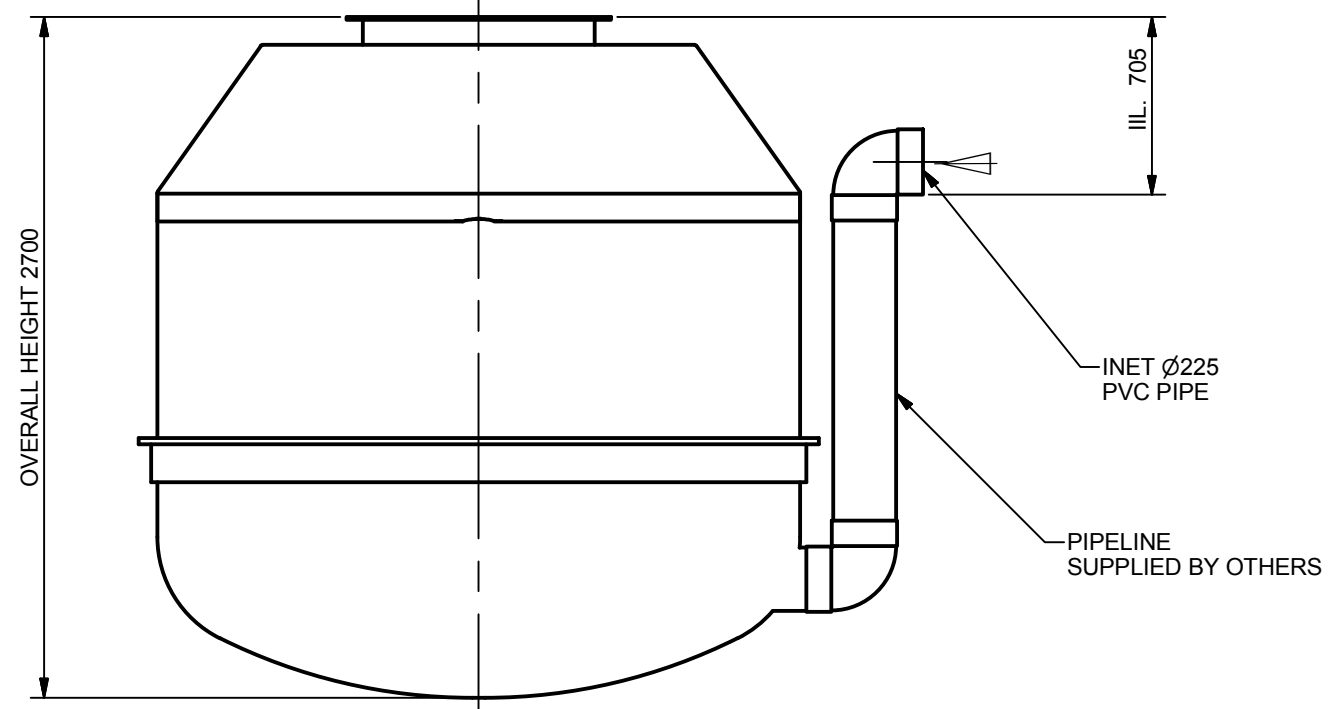
| Site Level Confirmation | |
|------------------------------|-----|
| Finished Surface Level (FSL) | RL: |
| Access Cover Thickness | mm |
| Inlet Invert Level | RL: |
| Outlet Invert Level | RL: |
| Company: | |
| Name: | |
| Date: | |

FRP TANK
I.D. 2500 x 2700H



PLAN VIEW

ISOMETRIC VIEW



ELEVATION VIEW

**SIDE VIEW
INLET**

APPROVED.....

NAME.....

SIGNED.....

DATE...../...../.....

ISSUE FOR APPROVAL
NOT FOR CONSTRUCTION

NOTICE:
 SYSTEM PIPEWORK MUST HAVE AT LEAST 250 MM OF FALL TO OPERATE CORRECTLY.

TOLERANCE: ALL DIMENSIONS 10mm UNLESS OTHERWISE STATED.

CLIENT: _____

DISTRIBUTOR: _____

CONFIDENTIAL - The drawings must not be disclosed to any third parties without written permission from SPEL Environmental Sydney. Unauthorised disclosure may result in prosecution.
 © SPEL Environmental - This drawing is the property of SPEL Environmental ABN: 83 151 832 629 and is subject to return on demand. It is submitted for the use only in connection with the proposal and contracts of SPEL Environmental with the expressed conditions that it is not to be reproduced or copied in any form. This data must only be used in accordance with our standard terms and conditions.
 © Copyright
 SPEL Environmental accepts no responsibility for any loss or damage resulting from any person acting on this information. The details and dimensions contained in this document may change, please check with SPEL Environmental for confirmation of current specifications.

| | |
|-------------|------------|
| Drawn | Date |
| M.MAKIN | 20/10/2016 |
| Check | Date |
| Verified | Date |
| Approved | Date |
| Request No. | |
| RN2981 | |

100 Silverwater Road Silverwater NSW 2128
 PH: 1300 773 500 | E: sales@spel.com.au
 www.spel.com.au

| | | | |
|---|-------|---------------------------|----|
| PROJECT : | | | |
| TITLE SPEL HYDROSYSTEM 2500 SHS.250D-1500C-10.225.PVC FRP TANK 2500 DIA.- 10 FILTER CARTRIDGES | | | |
| SCALE | N.T.S | SIZE | A3 |
| SHEET | 1 | REV | 1 |
| CUSTOMER CODE : | | DWG No. SP16-HY11760-P | |

D:\Vault\Working Folder\Designs\SPEL\PRODUCTS\HYDROSYSTEM\2500 SERIES\PROJECT\PELLIGRA GROUP - LEAKES BD LAVERTON\SP16-HY11760-P.dwg